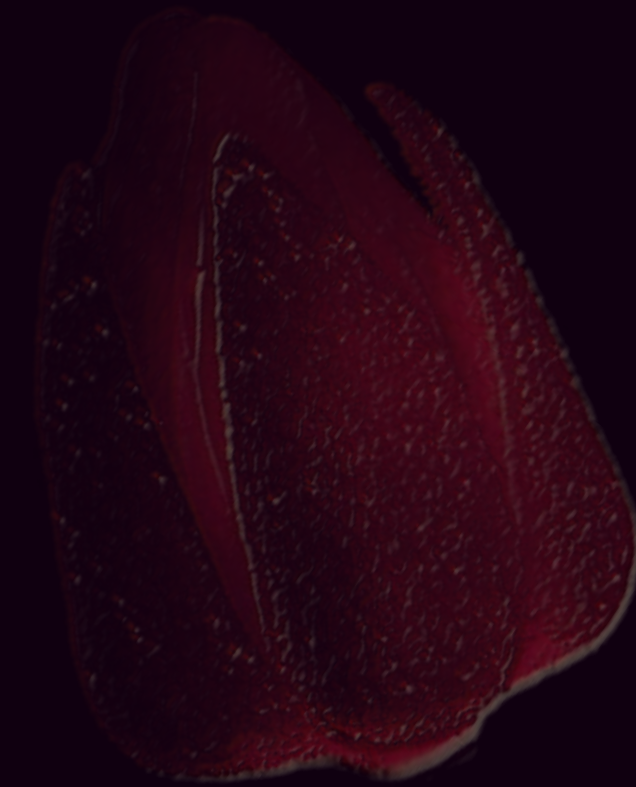


LA TILIA

— AT —

VILLANOVA



FLOOR PLANS

3-BEDROOM TOWNHOUSE
TYPE 3B1

MID UNIT
TOTAL AREA: 218.71 SQM | 2,354.17 SQFT



KEY PLAN



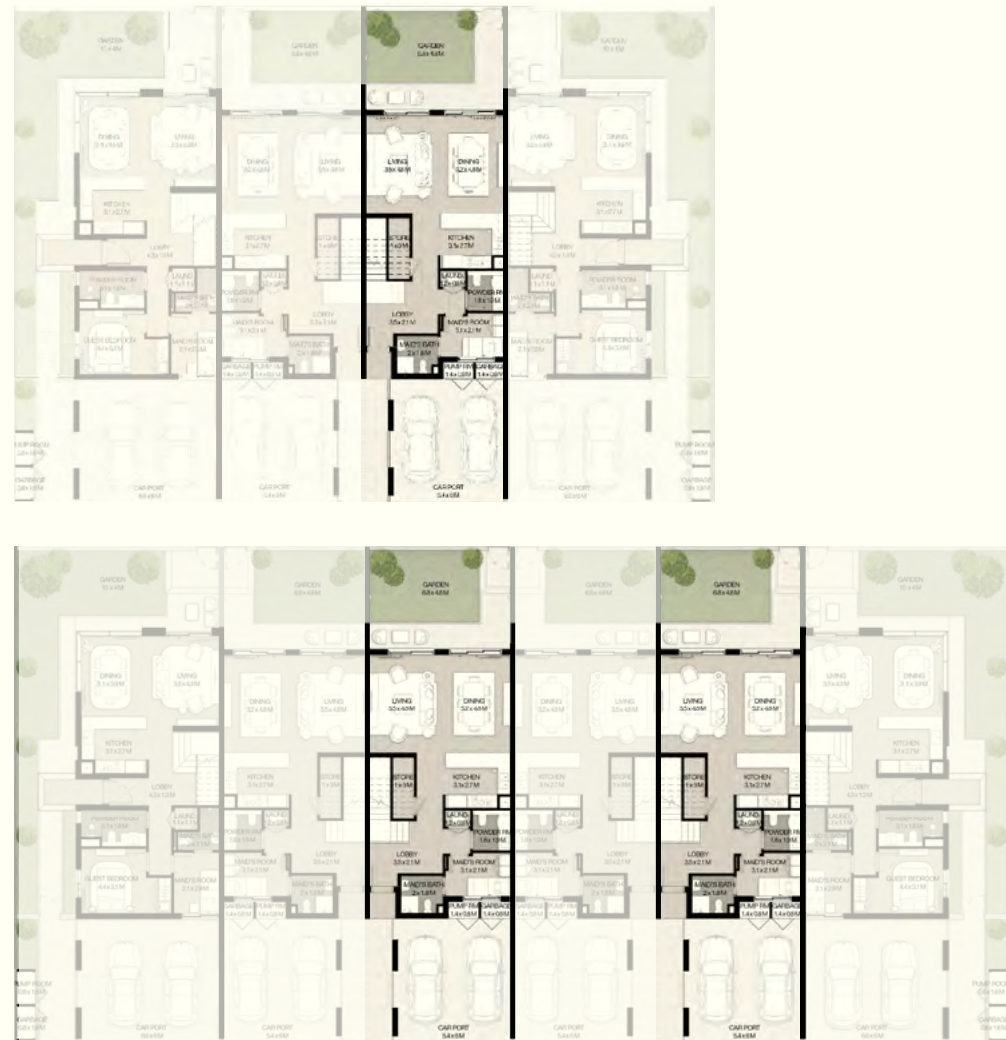
GROUND FLOOR



FIRST FLOOR

3-BEDROOM TOWNHOUSE
 TYPE 3B1 (M)

MID UNIT
 TOTAL AREA: 218.71 SQM | 2,354.17 SQFT



KEY PLAN



GROUND FLOOR



FIRST FLOOR

3-BEDROOM TOWNHOUSE
TYPE 3B2

MID UNIT
TOTAL AREA: 272.89 SQM | 2,937.36 SQFT



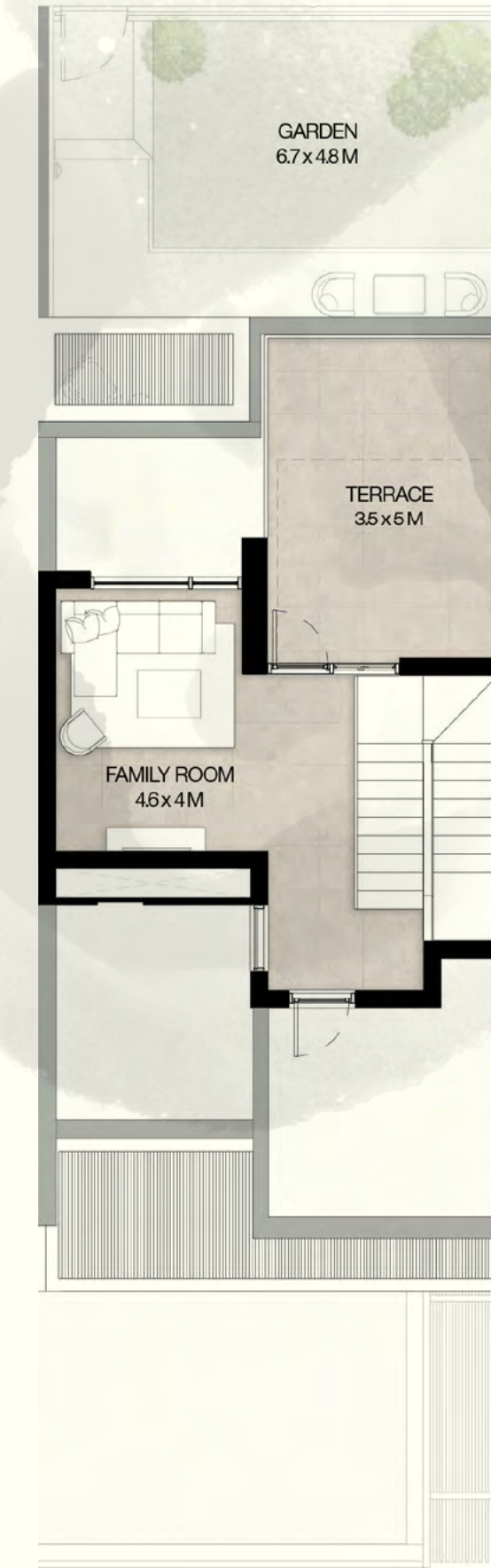
KEY PLAN



GROUND FLOOR



FIRST FLOOR



ROOF FLOOR

3-BEDROOM TOWNHOUSE
TYPE 3B2 (M)

MID UNIT
TOTAL AREA: 272.89 SQM | 2,937.36 SQFT



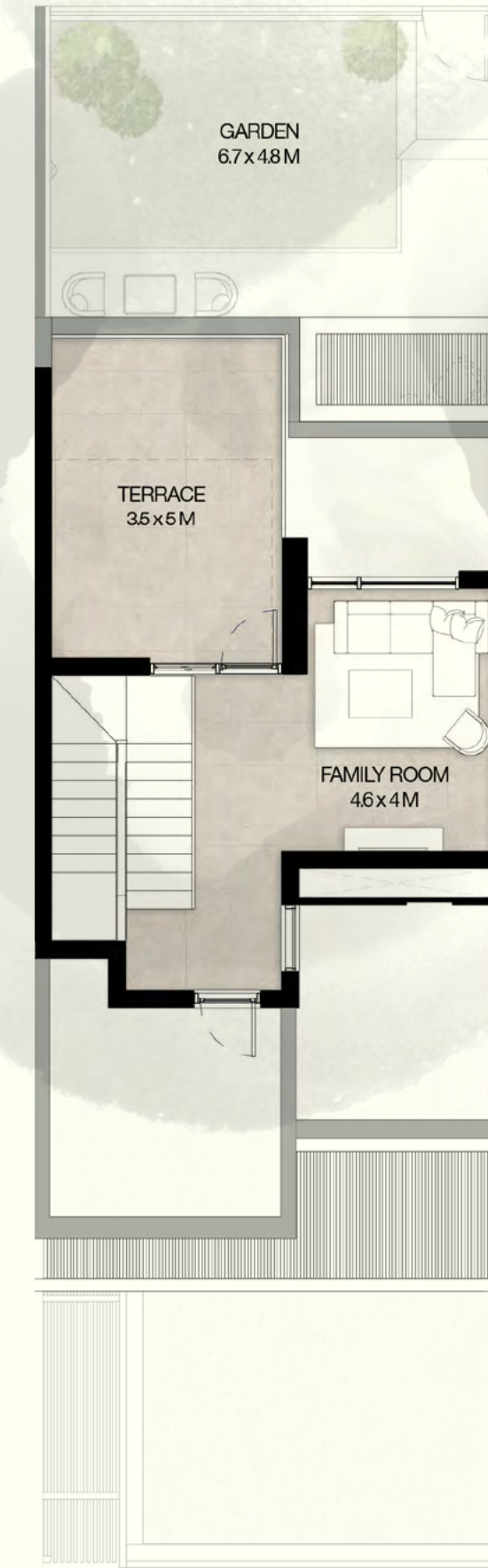
KEY PLAN



GROUND FLOOR



FIRST FLOOR



ROOF FLOOR

4-BEDROOM TOWNHOUSE
 TYPE 4B1

END UNIT
 TOTAL AREA: 230.09 SQM | 2,476.66 SQFT



KEY PLAN



GROUND FLOOR



FIRST FLOOR

4-BEDROOM TOWNHOUSE
TYPE 4B1 (M)

END UNIT
TOTAL AREA: 230.09 SQM | 2,476.66 SQFT



KEY PLAN



GROUND FLOOR



FIRST FLOOR

4-BEDROOM TOWNHOUSE
TYPE 4B2

END UNIT
TOTAL AREA: 293.40 SQM | 3,158.12 SQFT



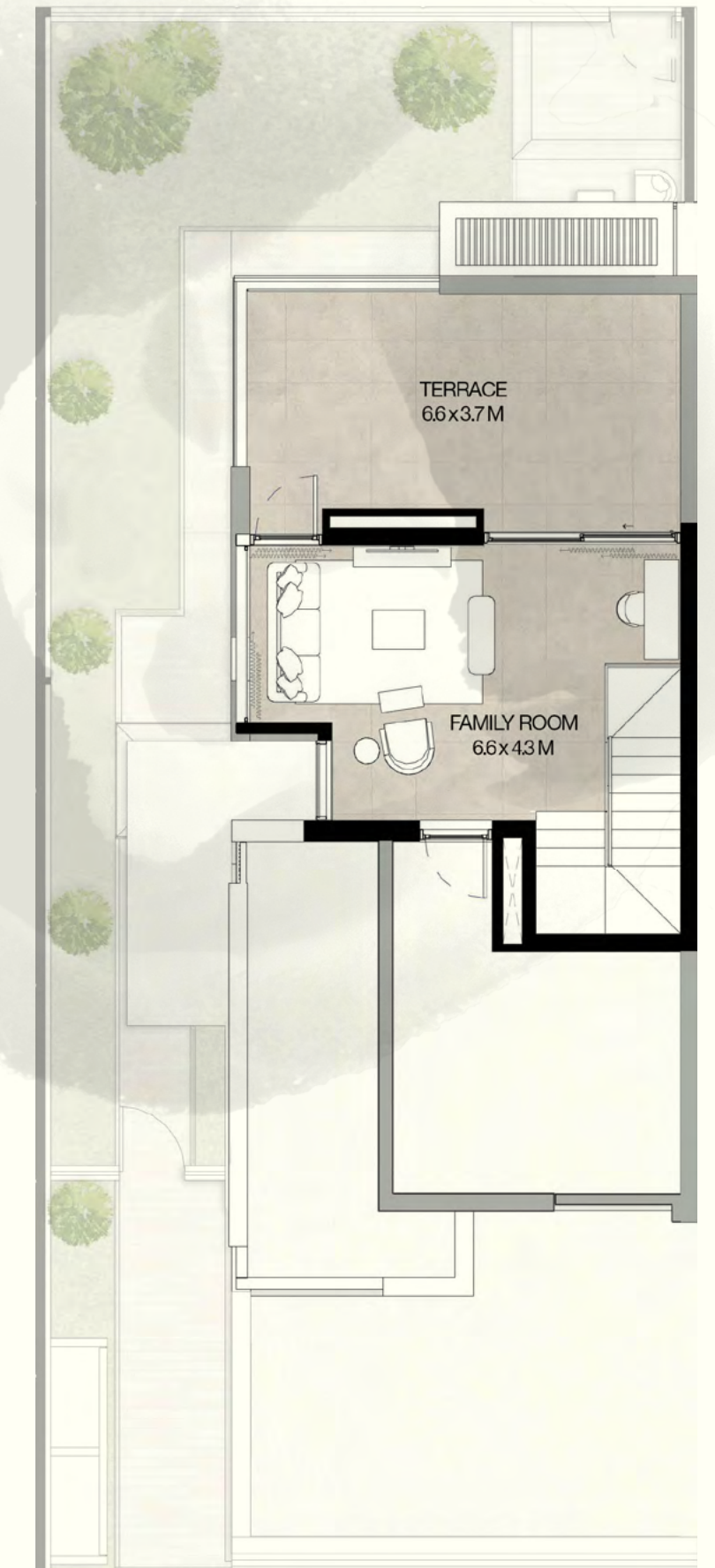
KEY PLAN



GROUND FLOOR



FIRST FLOOR



ROOF FLOOR

4-BEDROOM TOWNHOUSE
TYPE 4B2 (M)

END UNIT
TOTAL AREA: 293.40 SQM | 3,158.12 SQFT



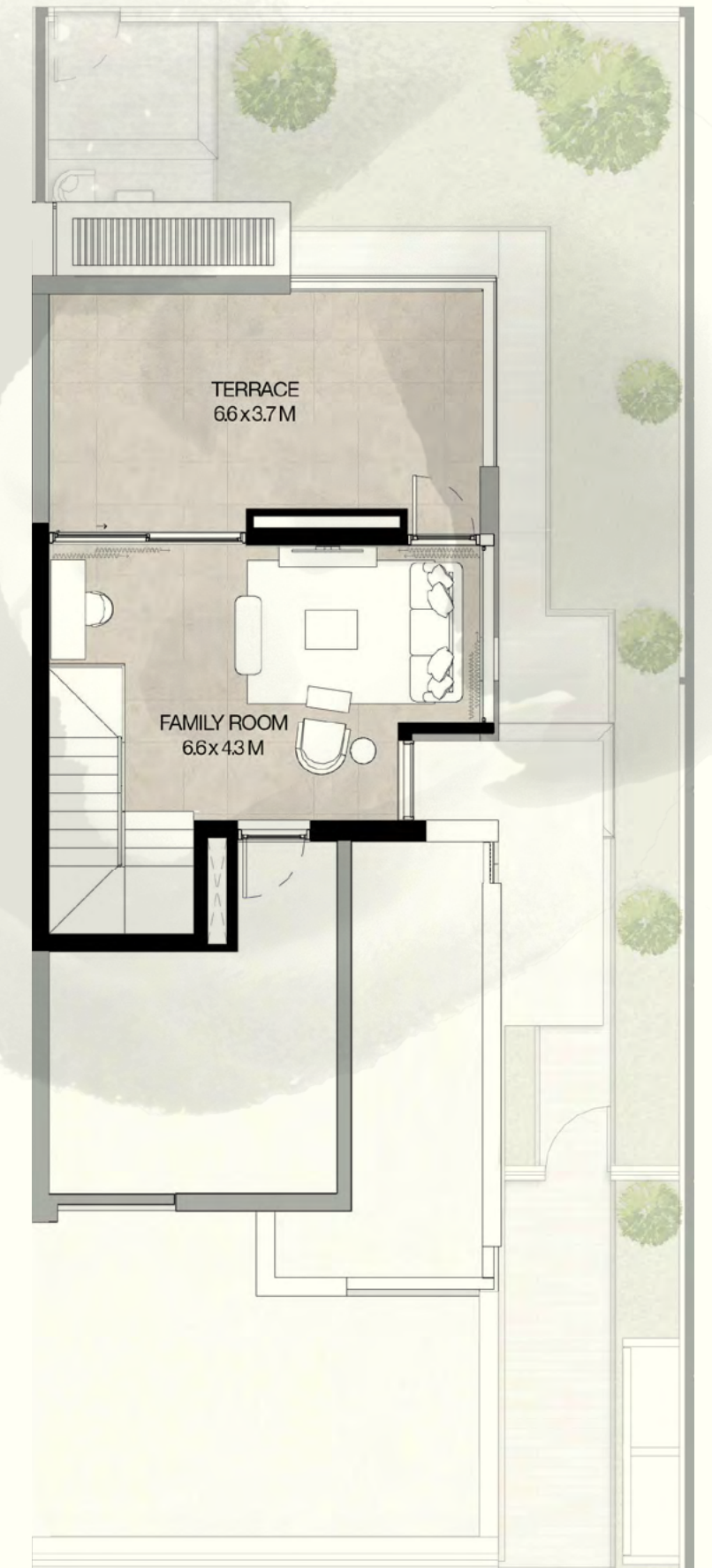
KEY PLAN



GROUND FLOOR



FIRST FLOOR



ROOF FLOOR